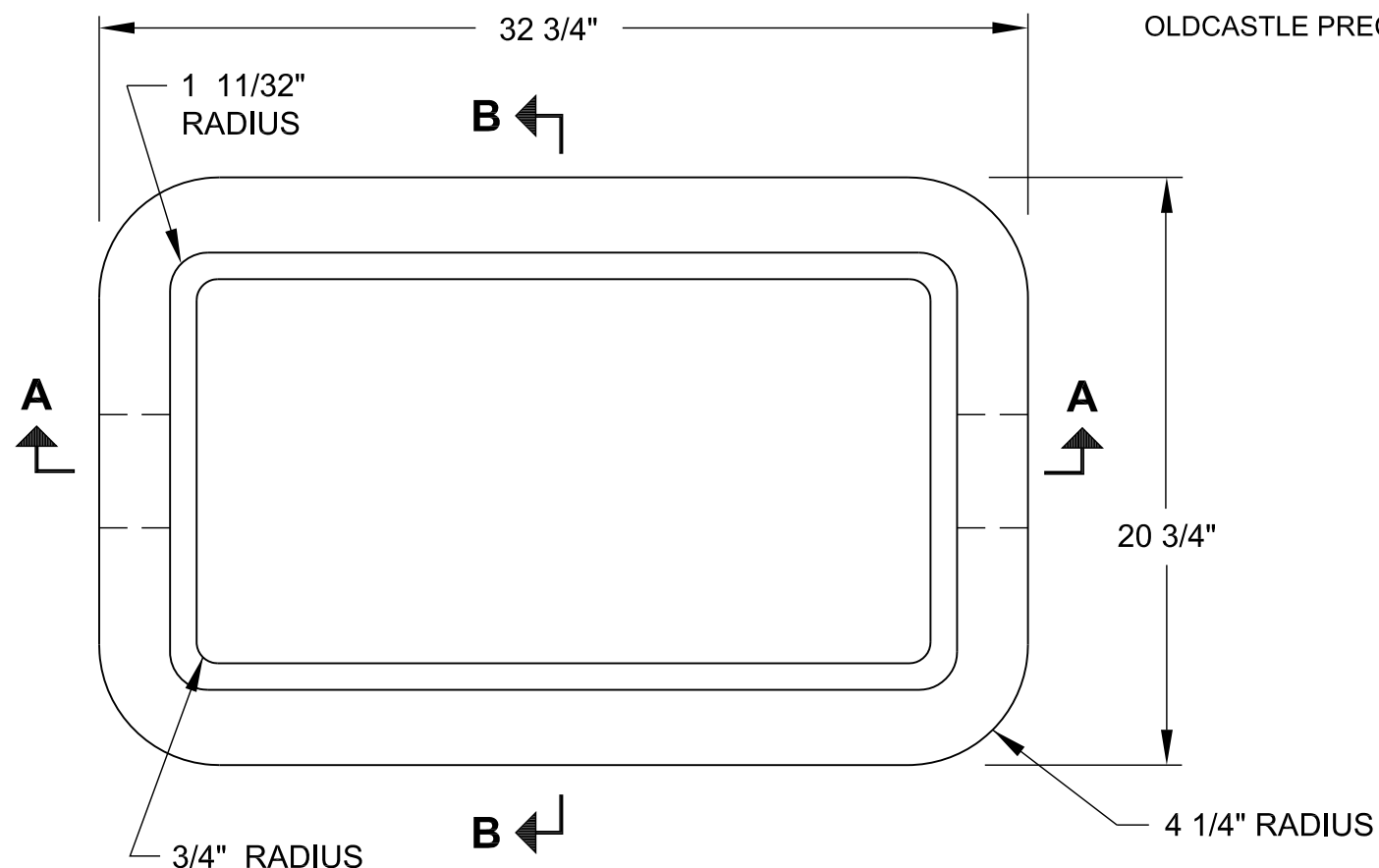


**MANUFACTURERS:**

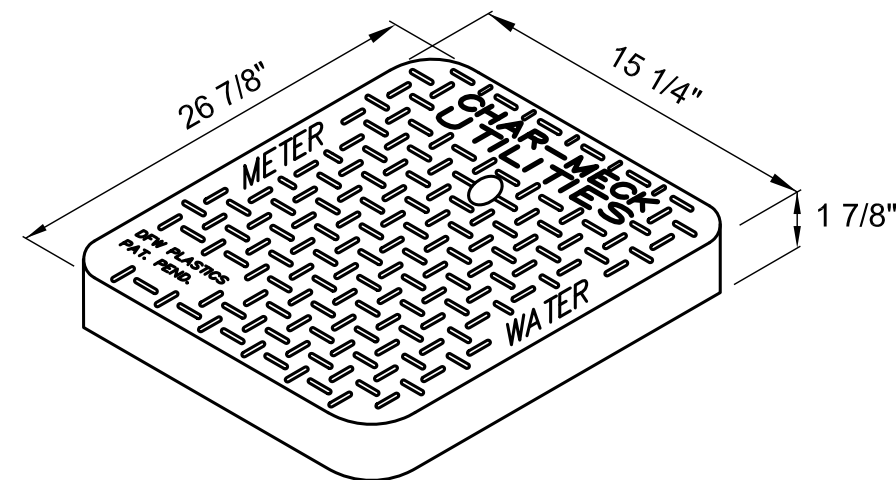
SOUTHERN METER #C.H. 2 METER BOX BODY  
 BROOKS #65MB METER BOX BODY  
 OLDCASTLE PRECAST #MB65 METER BOX BODY

**NOTES:**

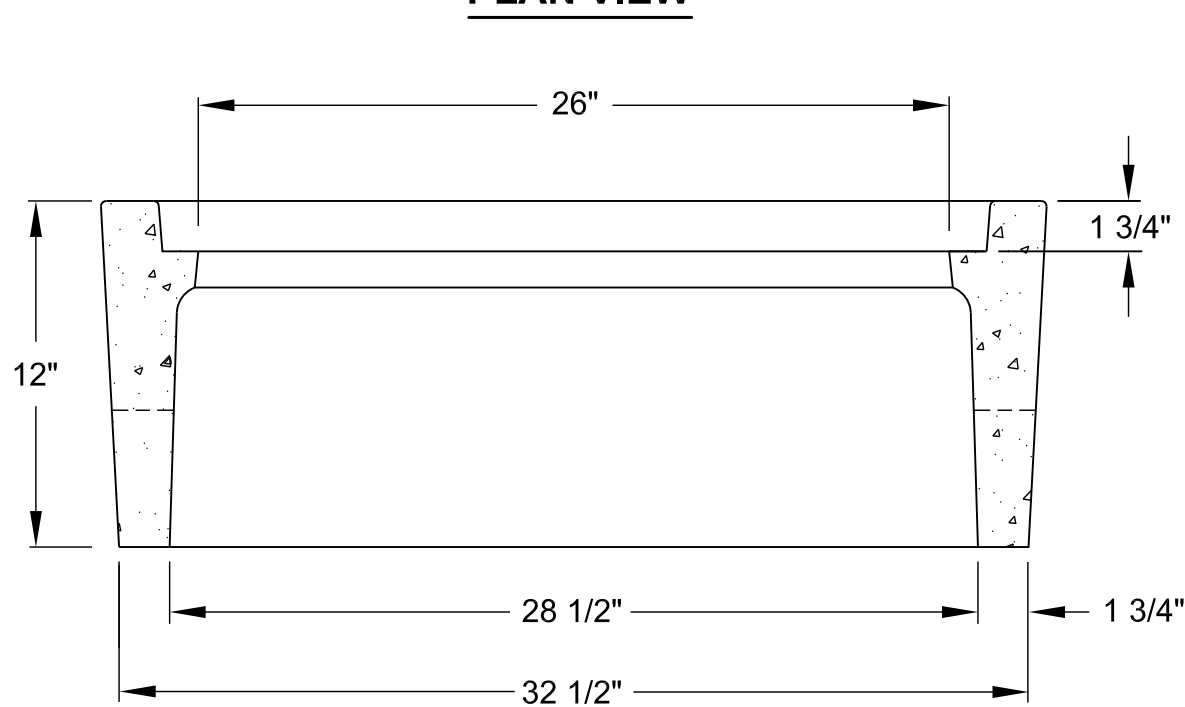
- A. METER BOX SHALL ACCOMMODATE COMPANION PLASTIC METER BOX LID - SEE STANDARD DETAIL.
- B. MINOR DIMENSION VARIATIONS ARE PERMITTED BASED ON MANUFACTURER'S PRODUCT LINES, PROVIDED THE CMUD STANDARD PLASTIC LID FITS PROPERLY.
- C. CONCRETE SHALL BE MINIMUM  $f'c = 3000$  PSI COMPRESSIVE STRENGTH.
- D. DESIGN SHALL CONFORM TO ASTM C858-SPECIFICATIONS FOR " UNDERGROUND PRECAST CONCRETE UTILITY.
- E. STEEL REINFORCING DESIGN SHALL CONFORM TO ASTM C 857.
- F. WELDED WIRE FABRIC SHALL CONFORM TO ASTM A 185 AND A 82.



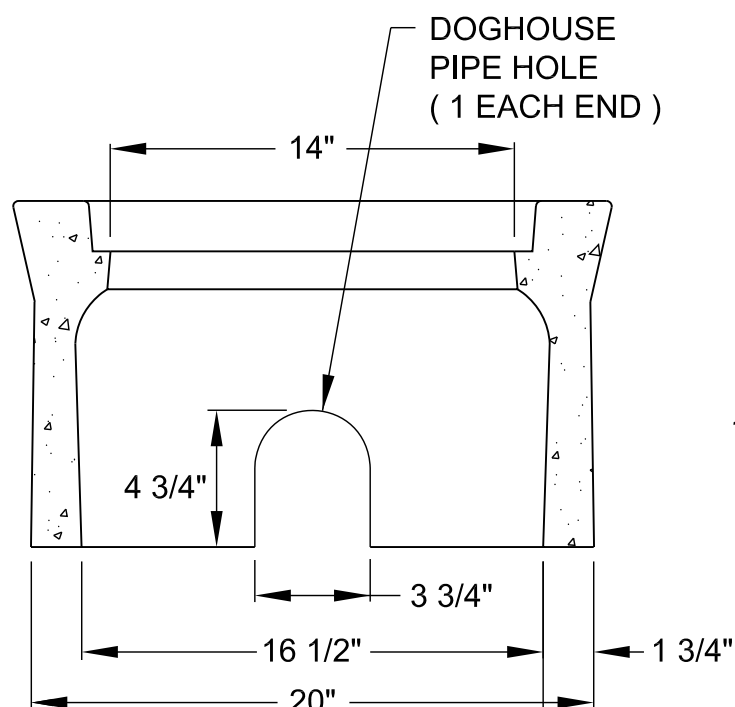
**PLAN VIEW**



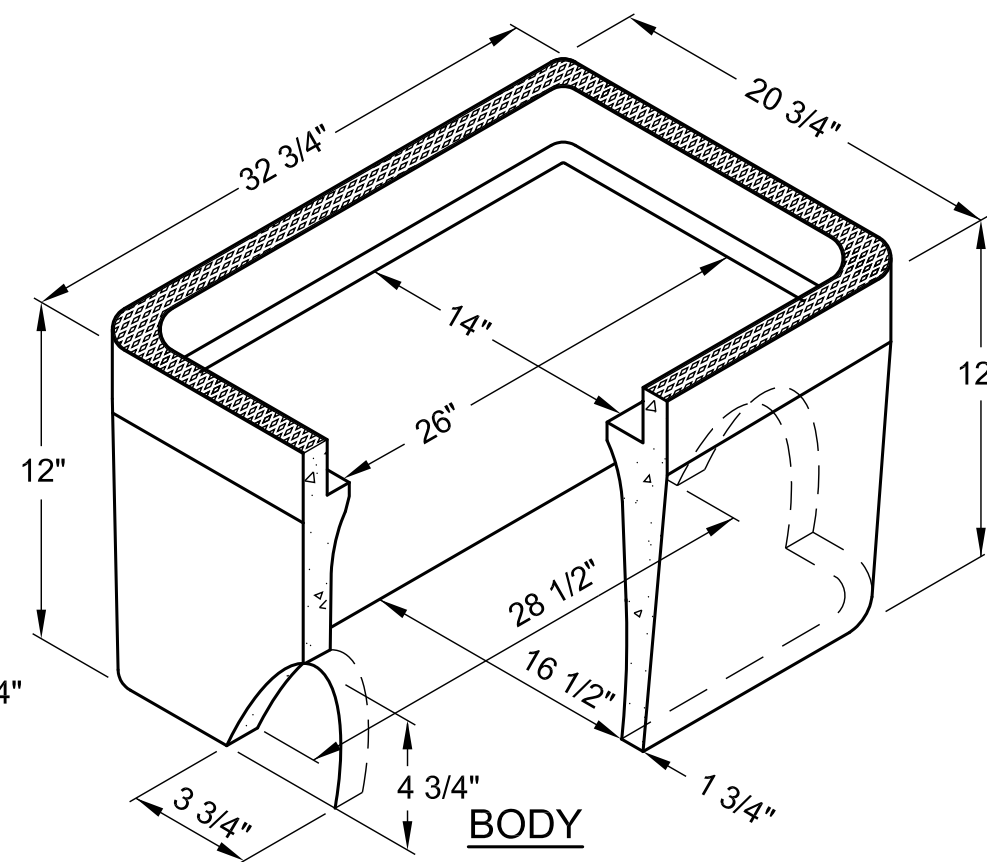
**PLASTIC LID**



**SECTION VIEW A-A**



**SECTION VIEW B-B**



**BODY**

WEIGHT - 150 LB. ( MIN. ) - 170 LB ( MAX. )

NO SCALE

STANDARD NO.

BB

VERSION DATE

8.23.2011

VERSION NO.

V1.0

PRECAST CONCRETE METER BOX  
 FOR 1 - INCH WATER SERVICE

CHARLOTTE-MECKLENBURG  
 UTILITIES

STANDARD DETAILS

WATER

