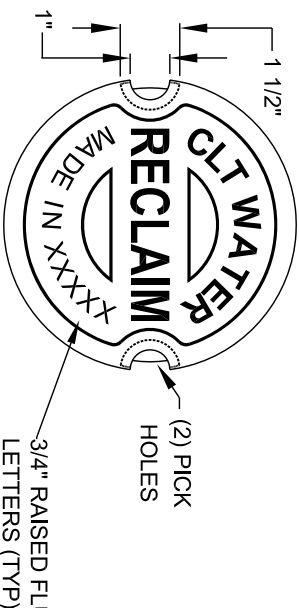
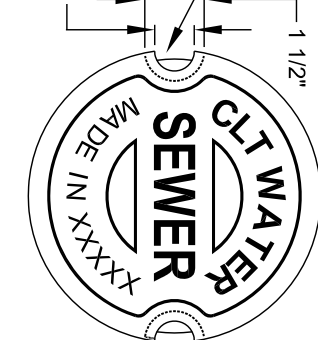


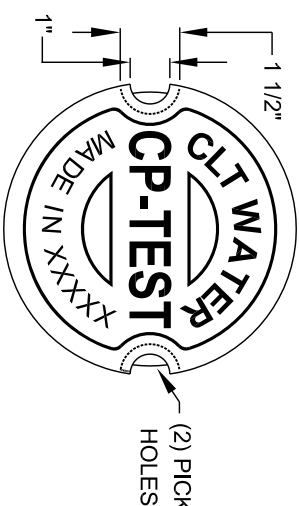
WATER COVER - TOP VIEW



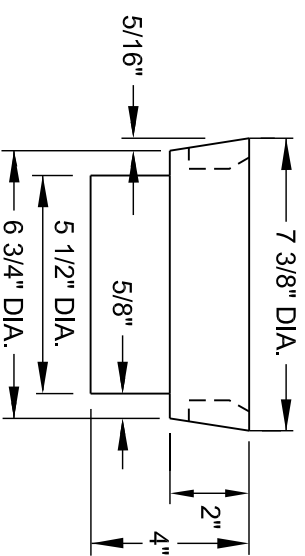
RECLAIMED WATER - TOP VIEW



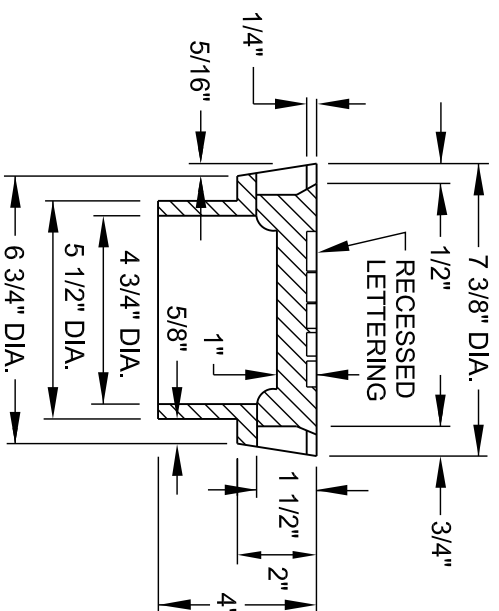
SEWER COVER - TOP VIEW



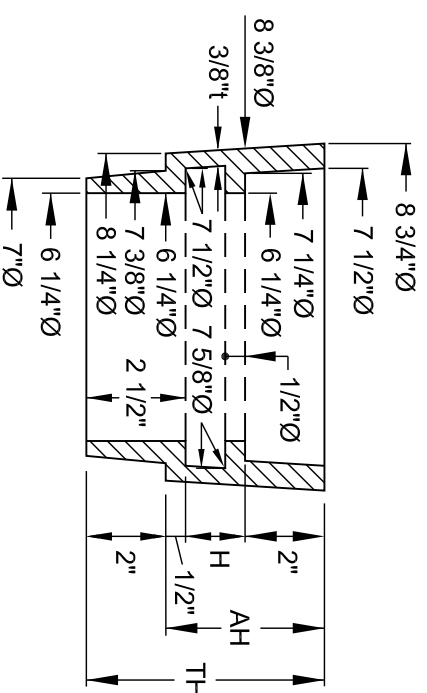
CATHODIC PROTECTION COVER  
TOP - VIEW



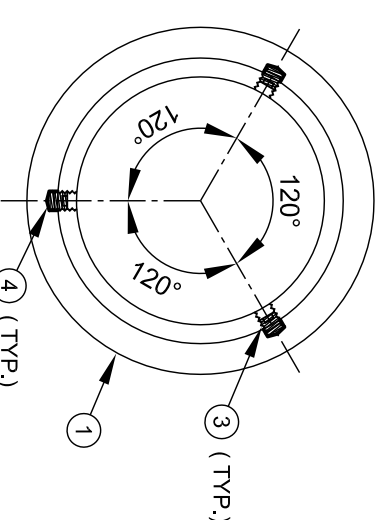
SIDE VIEW



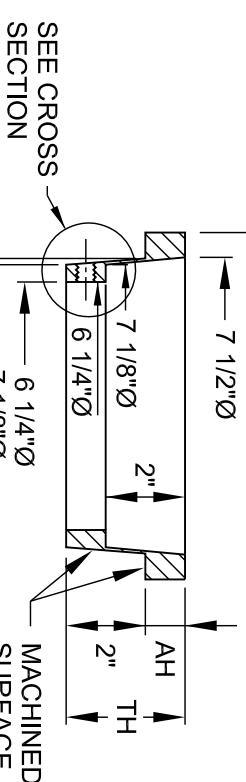
COVER - SECTION VIEW



TYPE II - ADJUSTMENT RISER  
SECTION VIEW



TYPE I - ADJUSTMENT RISER  
TOP VIEW



TYPE I - ADJUSTMENT RISER  
SECTION VIEW

- NO: DESCRIPTION**
1. TYPE I ADJUSTMENT RISER.
  2. VALVE BOX - TOP SECTION.
  3. 18 - 8 SS 3/8"-16 x 3/8" HEX SET SCREW WITH PERMANENT THREAD LOCK (RED) - LOCTITE # 271, PERMABOND HM128, OR APPROVED EQUAL.
  4. 1/2" DIA. x 1/16" - FIELD DRILL HOLE.

NO SCALE

STANDARD NO.	
FF	
VERSION NO.	VERSION DATE
V1.2	05.14.2018

**CAST IRON VALVE BOX  
( 12" AND SMALLER VALVES - ONLY )**

**CHARLOTTE WATER  
STANDARD DETAILS  
WATER/SEWER/RECLAIM/CP**



WEIGHT POUNDS	MINIMUM
TOP SECTION	31
BOTTOM SECTION	34
COVER	19
TOTAL	84

**NOTES:**

1. LOAD RATING - HEAVY DUTY.
2. FERROUS CASTINGS MATERIAL - ASTM A48 - CLASS 35 GRAY IRON.
3. COATING - UNDIPPED OR ASPHALT VARNISH.
4. WEIGHT - 0% MINUS TOLERANCE.
5. CASTINGS SHALL CONFORM TO DIMENSION AND WEIGHT REQUIREMENTS.
6. TYPE II ADJUSTMENT RISERS MAY BE STACKED.
7. TYPE I ADJUSTMENT RISERS MAY NOT BE STACKED.

TYPE II - ADJUSTMENT RISER			
TH - TOTAL HEIGHT	AH - ADJUSTMENT HEIGHT	H	MINIMUM WEIGHT - LBS
< 4 1/2"	< 2 1/2"	NOT APPROVED	NOT APPROVED
4 1/2"	2 1/2"	0	16
5"	3"	1/2"	20
6"	4"	1 1/2"	22.5
7"	5"	2 1/2"	25
8"	6"	3 1/2"	27
10"	8"	5 1/2"	32

TYPE I - ADJUSTMENT RISER			
TH - TOTAL HEIGHT	AH - ADJUSTMENT HEIGHT	MIN. WEIGHT LBS	
3"	1"	7	
3 1/2"	1 1/2"	9	
4"	2"	15	
> 4"	NOT APPROVED	N/A	