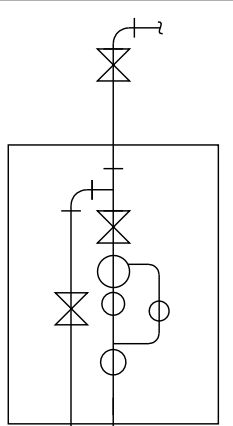
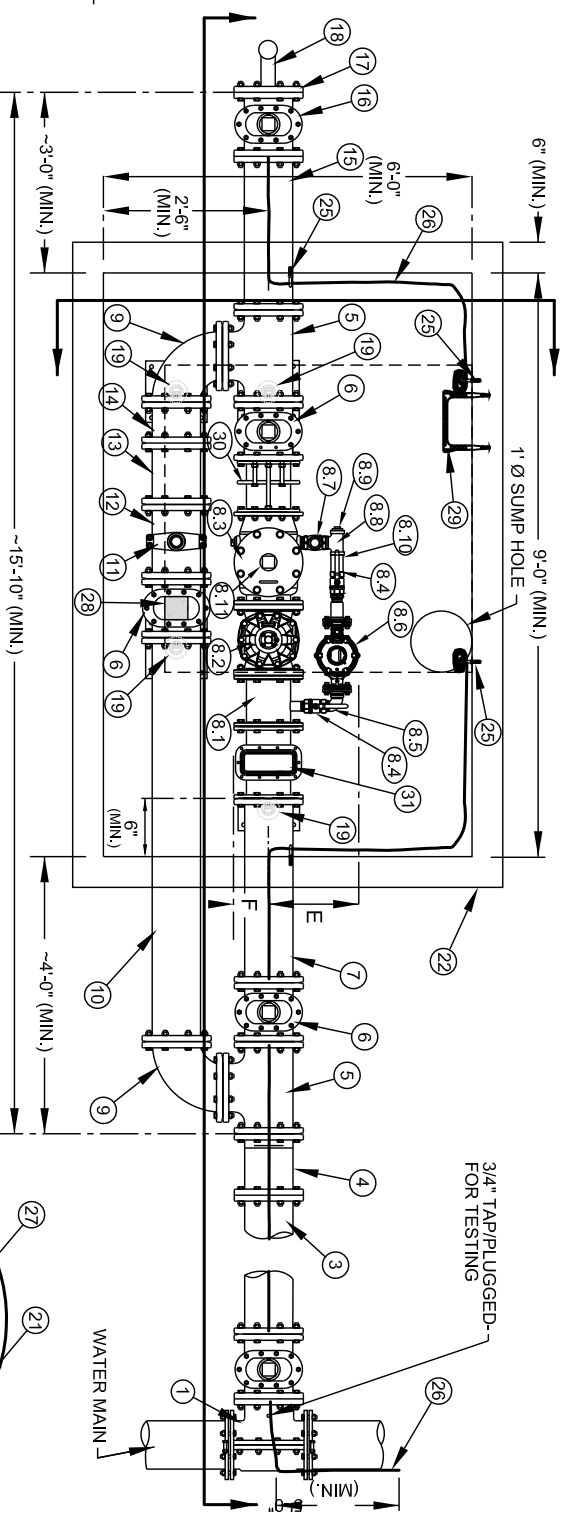


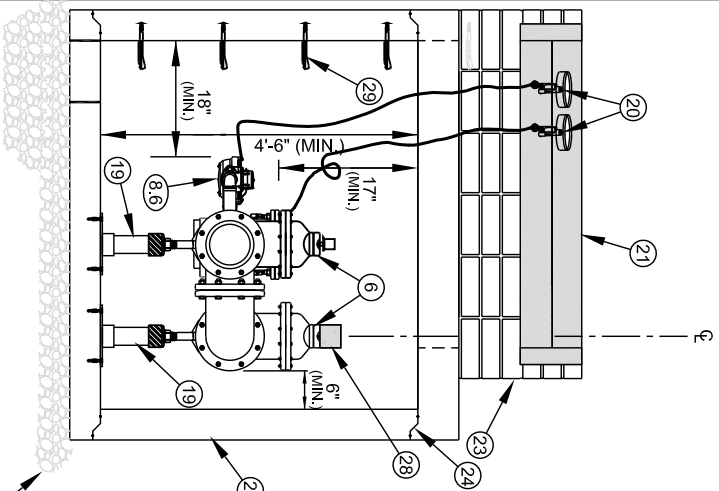
- NOTES:
- A. ALL FLANGE HARDWARE (BOLT/WASHER/NUT) SHALL BE STAINLESS STEEL - TYPE 304 WITH ANTI-SEIZE COMPOUND.
 - B. ALL PIPE SHALL BE RESTRAINED JOINT DUCTILE IRON FROM TAP TO PROPERTY LINE VALVE.
 - C. METER CONFIGURATION AND LENGTH / WIDTH MAY VARY DUE TO BRAND - VERIFY DIMENSIONS TO DETERMINE MINIMUM VAULT SIZE.
 - D. VAULT SHALL BE SIZED AS NEEDED FOR MINIMUM CLEARANCE AS SHOWN AND RATED FOR NCDOT HS-20 LOADING - SUBMIT SHOP DRAWINGS / P.E. SEALED FOR REVIEW.
 - E. ALL CONCRETE SHALL BE MINIMUM 4000 PSI COMPRESSIVE STRENGTH.
 - F. DESIGN SHALL CONFORM TO ASTM C858 - SPECIFICATIONS FOR "UNDERGROUND PRECAST CONCRETE UTILITY STRUCTURE"
 - G. STEEL REINFORCING DESIGN SHALL CONFORM TO ASTM C857
 - H. REBARS SHALL BE GRADE 60 PER ASTM A615
 - I. WELDED WIRE FABRIC SHALL CONFORM TO ASTM A185
 - J. DIAGONAL REINFORCING SHALL BE ADDED AT ALL OPENINGS
 - K. PIPE PENETRATIONS SHALL BE SEALED WITH FLEXIBLE CONNECTORS (MANHOLE BOOTS) OR WITH 8-INCHES OF BRICK & MORTAR (AND 1/2 INCH THICK CONSTRUCTION EXPANSION MATERIAL)
 - L. FRAME TO BE FLUSH WITH GROUND OR CONCRETE SIDEWALK, GROUND SHALL SLOPE AWAY FROM VAULT.
 - M. ALL PRECAST JOINTS SHALL BE MADE WATERTIGHT USING 2 RINGS OF BUTYL RUBBER JOINT MASTIC.
 - N. ALL VALVES SHALL BE OPEN RIGHT - CLOCKWISE, EXCEPT NO. (16)



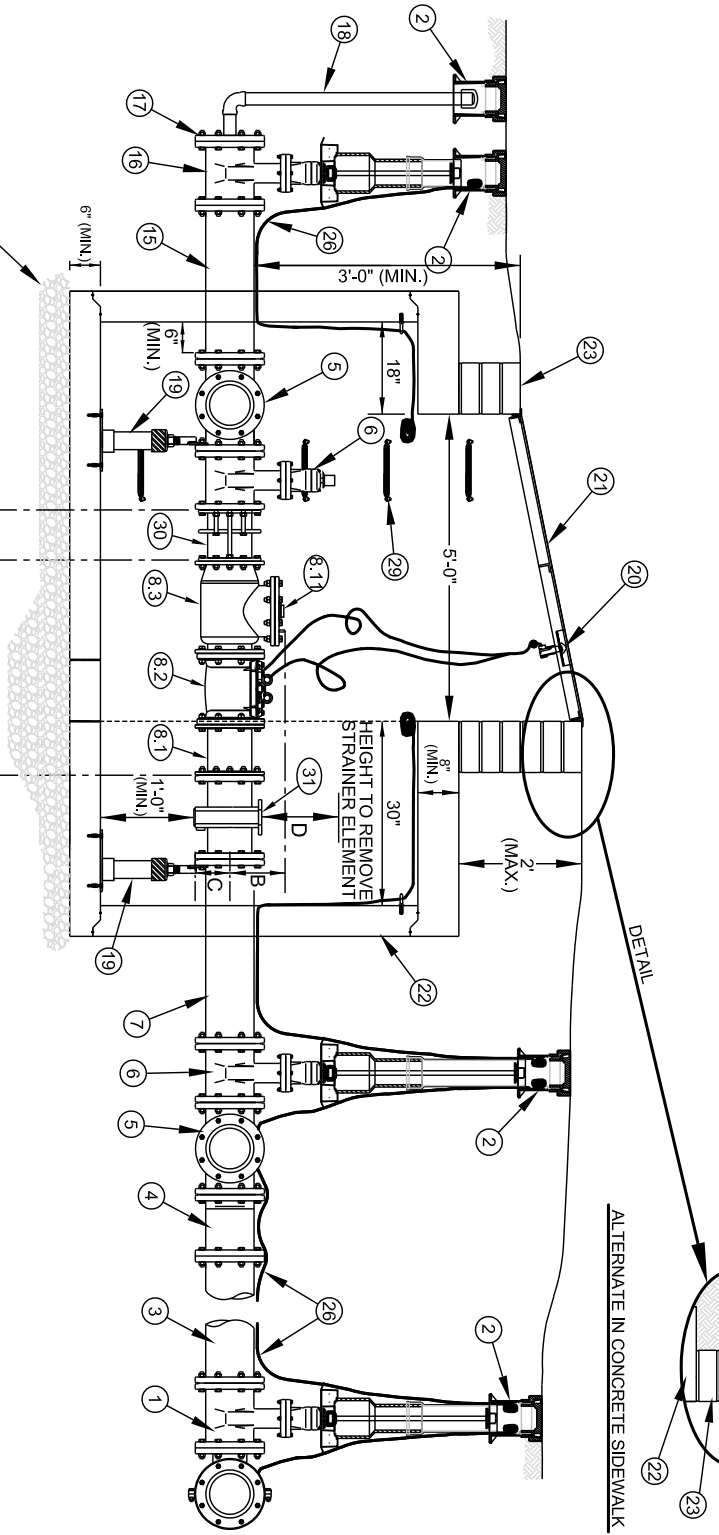
ALTERNATE SCHEMATIC
(FOR LIMITED SPACE INSTALLATIONS)



TYPICAL PLAN



SECTION VIEW



TYPICAL ELEVATION

DIMENSION B - F VARY SLIGHTLY - AS DETERMINED BY MANUFACTURER.

METER SIZE	A	B	C	D	E	F	G
8"	41 7/8"	12 3/4"	6 3/4"	16 1/2"	17"	6 3/4"	SMITH-BLAIR = 9.5" ROMAC = 9.0"

NO.	DESCRIPTION
-----	-------------

- 1 8" OUTLET TAPPING SLEEVE AND 8" FL x MJ TAPPING VALVE ON EXISTING MAIN, 8" MJ x SWIVEL OUTLET TEE AND 8" MJ GATE VALVE OR 8" MJ x MJ OUTLET TEE AND 8" FL x MJ GATE VALVE ON NEW MAIN
- 2 STANDARD VALVE BOX ASSEMBLY (TYPICAL) - ALL VALVES
- 3 8" DUCTILE IRON PIPE - RESTRAINED
- 4 8" MJ x FL DUCTILE IRON ADAPTER
- 5 8" ALL FLANGE DUCTILE IRON TEE
- 6 8" ALL FLANGE GATE VALVE
- 7 8" ALL FLANGE DUCTILE IRON PIPE SPOOL - L = 24" (MIN.), (SPECIAL CLASS 53)
- 8 8" DOMESTIC COMPOUND METER ASSEMBLY (FLANGE x FLANGE)
 - (8.1) 8" FL x FL SPOOL w/ 2" OUTLET
 - (8.2) 8" METER WITH AMR / TRANSMITTER
 - (8.3) 8" CHECK VALVE
 - (8.4) 2" BRASS BALL VALVE WITH HANDLE (FNPT x FNPT)
 - (8.5) 2" BRASS 90° BEND (FNPT x FNPT)
 - (8.6) 2" METER (2 BOLT METER FL - EACH END) WITH AMR / TRANSMITTER
 - (8.7) 2" BRONZE CHECK VALVE (FNPT x FNPT)
 - (8.8) 2" BRONZE TEE (FNPT x FNPT x FNPT)
 - (8.9) 2" BRONZE PLUG (MNPT)
 - (8.10) 2" RED BRASS PIPE NIPPLES (TYP - AS REQD) - (MNPT x MNPT)
 - (8.11) 3" (MIN.) SQUARE HEAD BRASS PLUG (MNPT)
- 9 8" DUCTILE IRON 90° BEND FLANGE x FLANGE
- 10 8" DUCTILE IRON PIPE - FLANGE x FLANGE SPOOL - L = 66" (MIN.) (SPECIAL CLASS 53)
- 11 8" x 1 1/2" SERVICE SADDLE WITH 1 1/2" BALL CORPORATION STOP - CC - TAPER THREAD x FNPT
- 12 8" DUCTILE IRON PIPE - FLANGE x PE - L = 20" (MIN.) (SPECIAL CLASS 53)
- 13 8" MECHANICAL JOINT DUCTILE IRON LONG PATTERN SOLID SLEEVE WITH RESTRAINED JOINT
- 14 8" DUCTILE IRON PIPE - FLANGE x PE - L = 14" (MIN.) (SPECIAL CLASS 53)
- 15 8" DUCTILE IRON PIPE - FLANGE x PE - L = 30" (MIN.) (SPECIAL CLASS 53)
- 16 8" MECHANICAL JOINT (RJ) GATE VALVE - OPEN LEFT AT PROPERTY LINE
- 17 8" MECHANICAL JOINT PLUG WITH 2" TAP (FNPT)
- 18 2" TEMPORARY BLOW OFF ASSEMBLY (GALV. STEEL (SCH 80), RED BRASS (SCH 40), HDPE (DR9) OR DIP - END WITH THREADED COUPLING)
- 19 GALV. STEEL OR S.S. ADJUSTABLE FLANGE PIPE SUPPORT (NUMBER REQD = 4) (WITH STAINLESS STEEL ADHESIVE ANCHORS)
- 20 AMR TRANSMITTERS (ERT)
- 21 5 FT x 5 FT ACCESS DOOR - SEE STD. DETAIL
- 22 PRECAST REINFORCED CONCRETE VAULT - 9 FT x 6 FT x 4.5 FT (MIN.) SEE NOTES C AND D.
- 23 MINIMUM OF (3) STD. SOLID CONCRETE BRICK COURSES UNDER ACCESS DOOR FRAME - MAX. 2 FT. (OR PRECAST CURBING - 8" WIDE)
- 24 JOINT REQUIRED AT FLAT TOP SECTION (OR WITHIN 16 INCHES)
- 25 3/8" DIA. GALV. STEEL EYE BOLT (EPOXY ADHESIVE ANCHOR) - TYPICAL
- 26 AWG #12 GAUGE COPPER TRACER WIRE, 30 MILS BLUE HDPE INSULATION - TERMINATE WITH 24" EXCESS WIRE (COILED) AT EYE BOLT AND VALVE BOX (TYPICAL) - CONNECT TO EXISTING TRACER WIRE ON MAIN.
- 27 CAST IN PLACE CONCRETE SIDEWALK - BRICKWORK SHALL NOT EXTEND TO SURFACE. ACCESS DOOR FRAME SHALL REST ON SIDEWALK.
- 28 VALVE LOCK (FURNISHED BY CLTW) - LOCK VALVE CLOSED.
- 29 PLASTIC STEP - 12" OR 16" O.C. VERTICAL SPACING.
- 30 DISMANTLING JOINT - FL x FL - (L = 9.5" OR 9.0" - EXTENDED) - SMITH BLAIR #975 OR ROMAC #DJ400 WITH STAINLESS STEEL TIE RODS / HARDWARE.
- 31 DOMESTIC PLATE STRAINER - FL x FL

NO SCALE

STANDARD NO.
CC

VERSION NO. 1.0
VERSION DATE 6.25.2019

8-INCH COMPOUND DOMESTIC METER
WATER METER AND PRECAST CONCRETE VAULT

CHARLOTTE WATER
STANDARD DETAILS
WATER

