

Long Creek WWTP Preliminary Engineering Report

Pre-Proposal Meeting

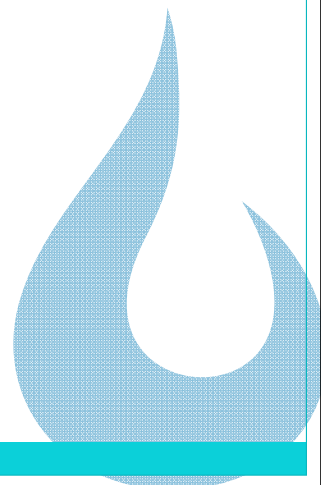


SEPTEMBER 16, 2016

CHARLOTTE
WATER

General Info

- Introductions
- Project team roles
- Sign-in sheet



SOQ Requirements

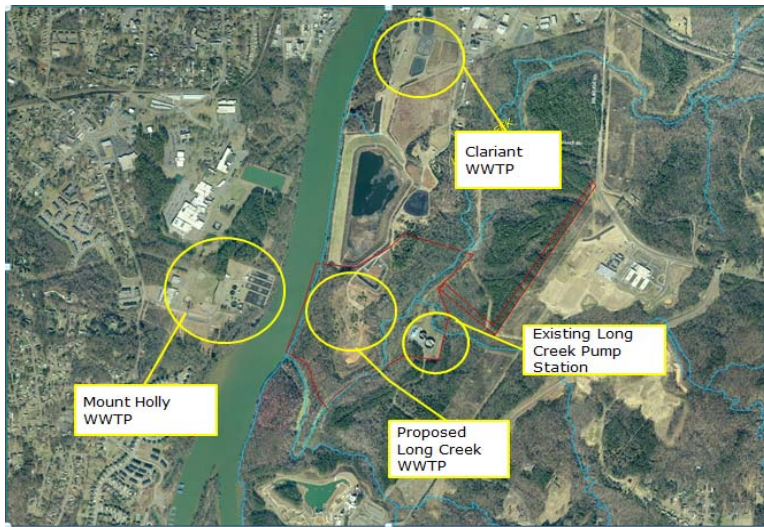
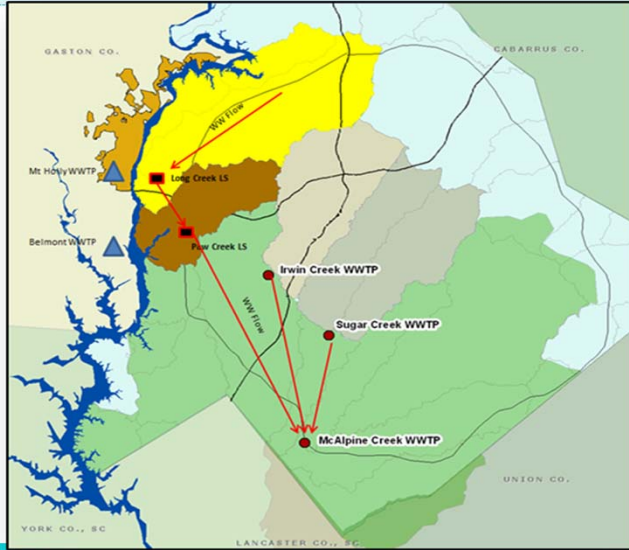
- SOQ deadlines
 - Last day for questions: September 27, 2016 @ 5:00 p.m
 - SOQ packages due: October 4, 2016 @ 2:00 p.m.
- Procedure for submitting
 - White box designated for “SERVICES”
 - Clearly labeled
 - Box dimensions stated in RFQ

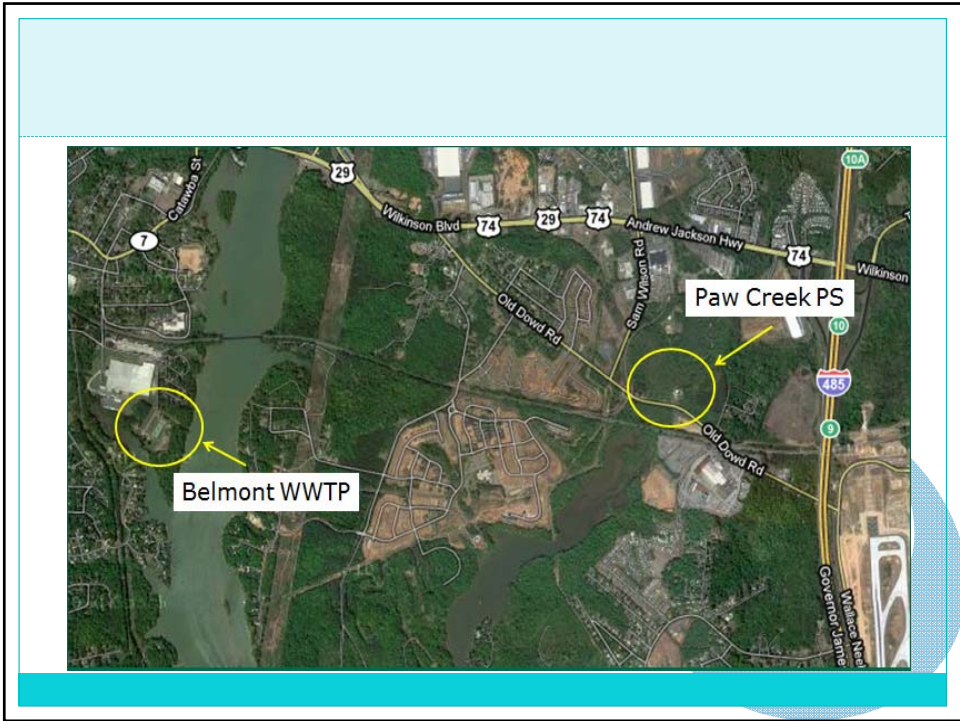


Project Description

- Regional Wastewater Plant
- New Liftstation, FM, and Flow EQ for Mt Holly to the Long Creek Liftstation
- New Liftstation, FM, and Flow EQ for Belmont to the Paw Creek Liftstation

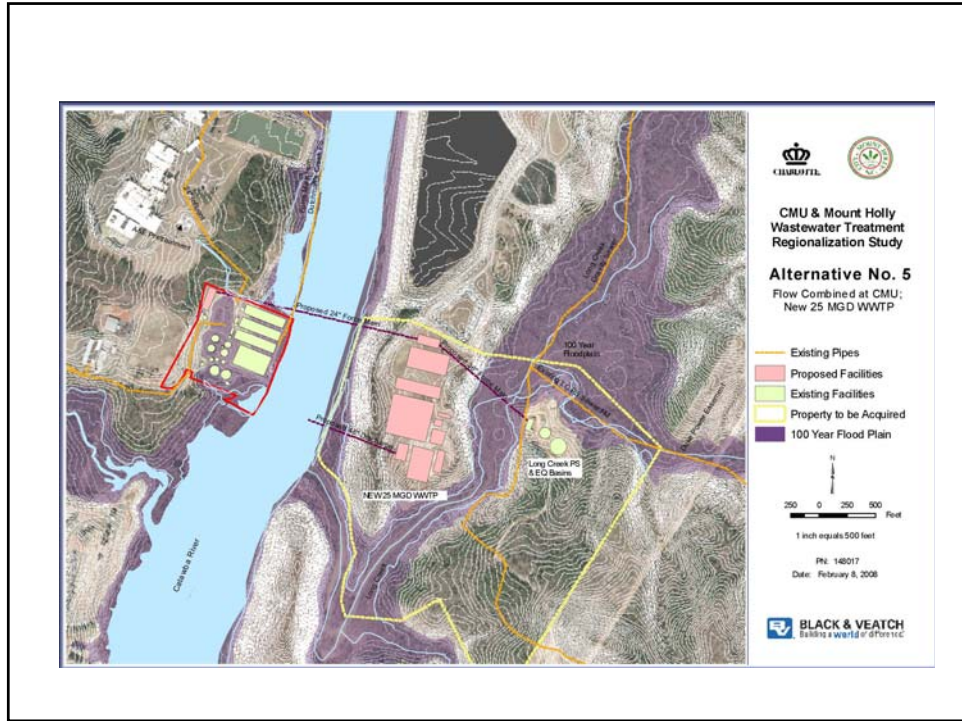
System Overview





Plant Site





Steps Completed To Date

- Clariant NPDES and Land Purchased for Plant with Phase II Environmental Completed
- MOA's with Belmont and Mt Holly Approved
- EIS Record of Decision Issued (*Posted to Website*)
- NPDES Permit Application Filed

Primary Items of Work for this Phase

- Extensive Geotech borings for river crossings
- Inventory of Permits required for Project
- Footprinting for up to 3 types of nutrient removal technologies
- Develop detailed routing for Belmont FM
- Updated Cost Estimates

Questions