

REDISTRICTING COUNCIL COMMITTEE MEETING

AUGUST 23, 2021

District Criteria (used in 2001 & 2011)

Importance of the First Order (Highest)

- Districts must have substantially equal population (Required)
- Districts should be reasonably compact (Strongly Recommended)
- District boundaries may follow neighborhood boundaries or the boundaries of areas containing residents sharing similar interests

District Criteria (used in 2001 & 2011) – cont.

Importance of the Second Order

- *When possible, districts should have relatively even partisan balance*.*
- District boundaries may be drawn to create/maintain balance between major political parties.
- District boundaries may follow precinct boundaries.
- District boundaries may be drawn considering the race of district residents as long as race is not the predominant motivating factor.
- District(s) most likely to be impacted by future annexations may be smaller to minimize impact of future annexations on future re-districting.
- District boundaries may be drawn to avoid contests between incumbents.

**Only additional criteria recommended by Citizens' Advisory Committee on Governance in 2020 report.*

Redistricting Planning Committee

- In 2001 and 2011, *Ad Hoc Bi-partisan Redistricting Planning* Committee of 5 appointed by Mayor; chaired by at-large member; staffed by City Attorney
- Committee sets *Rules of Operation* for process of adopting redistricting plans
- After Council adopts its *district criteria*, Committee uses it in redrawing plans
- Meet with all Councilmembers and Mayor to solicit proposals for revised district plans
- Recommends to Council revised district plans for adoption based on census data in accordance with law

Timelines Tied to Redistricting and Census Data

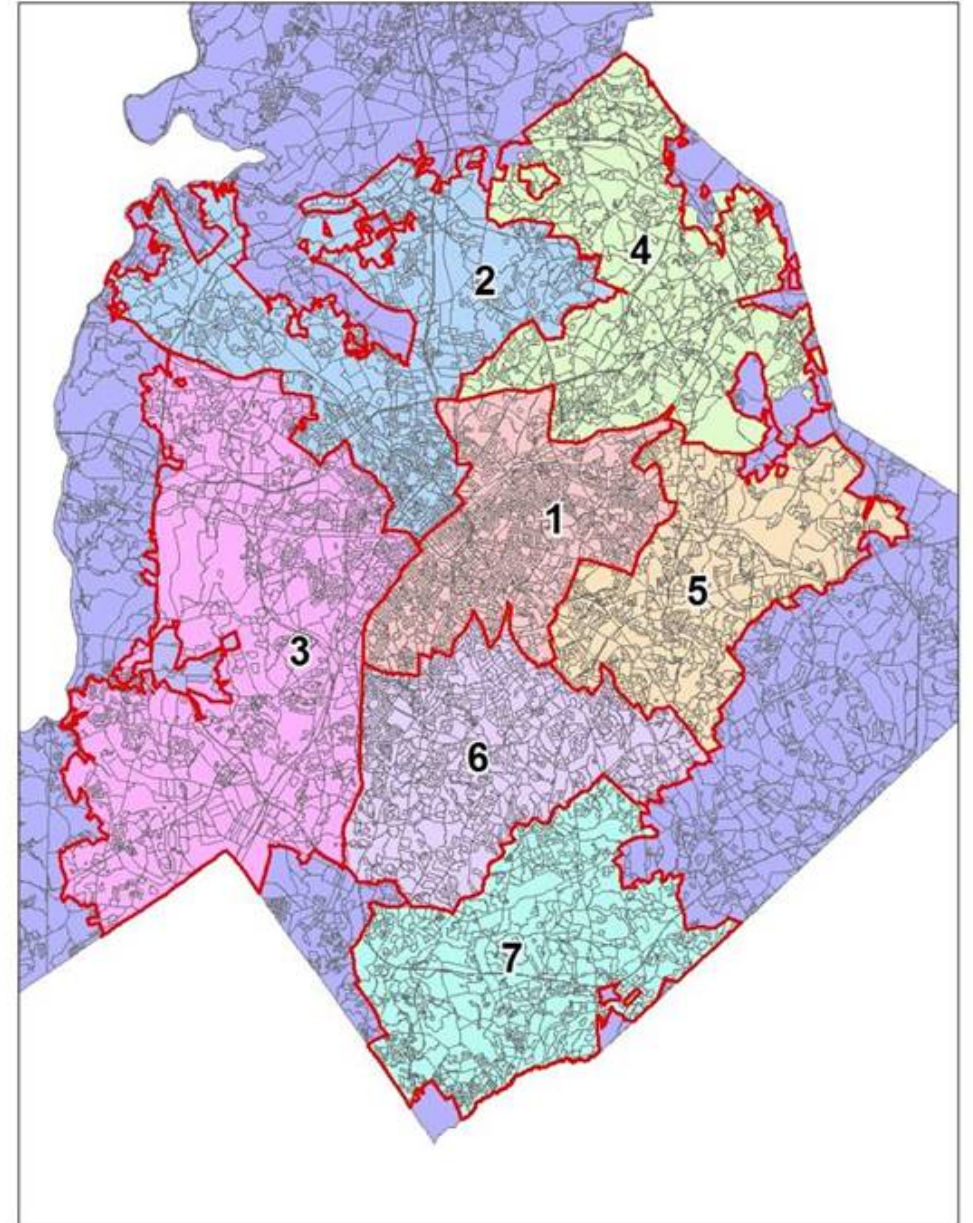
2021 and 2022 Key Dates (based on SB 722)

- **October 11:** Public hearing on proposed revised districts
- **November 8:** Council adoption of revised district maps based on census data
- **November 12:** Provide revised electoral districts to local board of elections
- **November 17:** Review and revise electoral districts in accordance with law*
- **December 6 - 17:** Filing period for delayed municipal elections
- **January 3- 7, 2022*:** Second filing period if redistricting incomplete by Nov 17
- **March 8, 2022:** Partisan municipal primary (no second primary date)
- **April 26, 2022:** General election

Population Totals Based on 2020 Census Redistricting

Population Totals
2020 Census Redistricting File

District	Total	Variance	% Variance
1	114,285	-11,313	-9.0%
2	133,399	7,801	6.2%
3	142,218	16,620	13.2%
4	133,819	8,221	6.5%
5	116,618	-8,980	-7.1%
6	113,719	-11,879	-9.5%
7	125,130	-468	-0.4%
Grand Total	879,188		
Equal Size	125,598		
10% Rule	28,499	22.7%	



Questions?