



**CHARLOTTE-MECKLENBURG POLICE DEPARTMENT
YEAR-TO-DATE SUMMARY: DECEMBER, 2009**

**Rodney Monroe
Chief of Police**

% CHANGE AND RANK

PART ONE CRIMES

Through week ending 12/31/2009

Curr Qtr: 10/1/2009 - 12/31/2009

Prev Yr Qtr: 10/1/2008 - 12/31/2008

Curr Yr: 1/1/2009 - 12/31/2009

Prev Yr: 1/1/2008 - 12/31/2008

= Top 5 beats and Top 1 division with highest decreases

= Top 5 beats and Top 1 division with highest increases

		QUARTER-TO-DATE						YEAR-TO-DATE				
		Beat	Beat % Change	Beat Rank (1 to 39)	Division % Change	Division Rank (1 to 13)	Patrol North / Patrol South Rank	Beat % Change	Beat Rank (1 to 39)	Division % Change	Division Rank (1 to 13)	Patrol North / Patrol South Rank
Northeast Service Area	Eastway Division	0611	-21.3%	13	-21.5%	3	1	-27.2%	6	-25.0%	2	1
		0612	-21.2%	14				-21.7%	16			
		0613	-21.7%	12				-25.2%	10			
	North Tryon Division	0711	6.8%	37	-3.9%	11	6	-0.8%	37	-13.1%	11	6
		0712	-18.2%	16				-26.6%	7			
		0713	-1.9%	35				-11.4%	29			
	University City Division	1411	-5.1%	32	-4.8%	10	5	-24.0%	13	-19.2%	6	2
		1412	-6.4%	30				-10.7%	30			
		1413	-2.5%	34				-24.3%	12			
Northwest Service Area	North Division	1111	-7.6%	27	-8.1%	9	4	-9.5%	33	-15.0%	9	4
		1112	-5.9%	31				-17.7%	22			
		1113	-10.7%	22				-17.9%	21			
	Metro Division	0211	-34.6%	3	-11.0%	8	3	-36.4%	1	-15.9%	8	3
		0212	-10.3%	23				-15.3%	26			
		0213	11.1%	38				2.8%	39			
	Freedom Division	2711	-24.4%	8	-17.8%	6	2	-12.1%	28	-14.3%	10	5
		2712	-10.7%	21				-10.7%	31			
		2713	-18.1%	17				-20.5%	19			
Southeast Service Area	Hickory Grove Division	1211	-37.3%	2	-18.4%	4	3	-21.2%	17	-20.0%	5	4
		1212	-8.4%	26				-20.7%	18			
		1213	-8.7%	25				-17.4%	23			
	Independence Division	1711	-25.5%	7	-17.0%	7	5	-19.4%	20	-9.7%	12	6
		1712	-7.3%	28				-0.5%	38			
		1713	-17.7%	18				-8.5%	34			
	Providence Division	1611	3.5%	36	-2.8%	12	6	-16.5%	24	-18.6%	7	5
		1612	-11.0%	20				-24.4%	11			
		1613	-3.9%	33				-16.1%	25			
South Division	2211	-41.5%	1	-31.8%	1	1	-28.0%	5	-23.2%	4	3	
	2212	-23.2%	9				-13.6%	27				
	2213	-30.8%	5				-29.3%	3				
Southwest Service Area	Central Division	0111	19.9%	39	0.0%	13	7	-3.7%	35	-7.3%	13	7
		0112	-7.2%	29				-1.4%	36			
		0113	-18.9%	15				-23.5%	14			
	Westover Division	2611	-22.6%	11	-17.9%	5	4	-25.5%	9	-23.8%	3	2
		2612	-10.2%	24				-29.8%	2			
		2613	-23.0%	10				-10.4%	32			
	Steele Creek Division	2111	-27.6%	6	-23.9%	2	2	-25.5%	8	-25.7%	1	1
		2112	-31.0%	4				-22.1%	15			
		2113	-12.3%	19				-28.7%	4			

Note: Totals, percent changes, and rankings in this chart are based on the most current on-line operational data from criminal case reports. Each incident report is counted as one case in this data and the date used for each case is the original reporting date. Figures therefore may vary slightly from Uniform Crime Reporting (UCR), which creates static monthly reports based not on the case date but on various activity dates for reporting/unfounding/reclassification and individual counting rules that are victim-based rather than case-based for certain crime types.

INDEX OFFENSES* REPORTED BY CHARLOTTE-MECKLENBURG POLICE DEPARTMENT

December, 2009 INDEX OFFENSES	THIS YEAR TO DATE	LAST YEAR TO DATE	ANNUAL % CHANGE
HOMICIDE (MURDER & NON-NEGLIGENT MANSLAUGHTER)**	56	83	-32.5%
RAPE TOTAL	299	266	12.4%
ACTUAL	272	245	11.0%
ATTEMPT	27	21	28.6%
ROBBERY TOTAL	2346	2984	-21.4%
ARMED	1873	2466	-24.0%
STRONG-ARM	473	518	-8.7%
AGGRAVATED ASSAULT TOTAL	2918	3731	-21.8%
BURGLARY TOTAL	9723	11933	-18.5%
RESIDENTIAL	7766	9063	-14.3%
COMMERCIAL	1957	2870	-31.8%

FORCE	7856	9683	-18.9%
NO FORCE	1256	1332	-5.7%
ATTEMPT	705	918	-23.2%
LARCENY TOTAL	25377	29735	-14.7%
\$200 AND OVER	12943	15417	-16.1%
\$50 TO \$200	4796	5273	-9.1%
UNDER \$50	7638	9045	-15.6%

FROM AUTO	12608	16187	-22.1%
BICYCLE	271	245	10.6%
SHOPLIFTING	3762	3237	16.2%
OTHERS	8736	10066	-13.2%
VEHICLE THEFT TOTAL	3337	5266	-36.7%
ARSON TOTAL	252	335	-24.8%
TOTALS	44307	54334	-18.5%
VIOLENT PROPERTY	5618	7065	-20.5%
PROPERTY	38689	47269	-18.2%

*Note: Data in this report is based on preliminary numbers for the most current month. Offenses are counted based on Uniform Crime Reporting (UCR) guidelines.

INDEX OFFENSES* REPORTED BY CHARLOTTE-MECKLENBURG POLICE DEPARTMENT

INDEX OFFENSES	3rd Quarter to date			4th Quarter to date		
	2009	2008	% CHANGE	2009	2008	% CHANGE
HOMICIDE (MURDER & NON-NEGLIGENT MANSLAUGHTER)	14	20	-30.0%	16	21	-23.8%
RAPE TOTAL	92	67	37.3%	63	64	-1.6%
ACTUAL	84	64	31.3%	57	59	-3.4%
ATTEMPT	8	3	166.7%	6	5	20.0%
ROBBERY TOTAL	621	742	-16.3%	621	800	-22.4%
ARMED	500	611	-18.2%	500	673	-25.7%
STRONG-ARM	121	131	-7.6%	121	127	-4.7%
AGGRAVATED ASSAULT TOTAL	820	961	-14.7%	645	858	-24.8%
BURGLARY TOTAL	2272	2997	-24.2%	2542	2919	-12.9%
RESIDENTIAL	2096	2244	-6.6%	2110	2283	-7.6%
COMMERCIAL	270	753	-64.1%	432	636	-32.1%

FORCE	1850	2417	-23.5%	2052	2419	-15.2%
NO FORCE	341	346	-1.4%	310	305	1.6%
ATTEMPT	175	234	-25.2%	180	195	-7.7%
LARCENY TOTAL	6619	6937	-4.6%	5846	6497	-10.0%
\$200 AND OVER	3338	3593	-7.1%	2948	3281	-10.1%
\$50 TO \$200	1197	1197	0.0%	1173	1242	-5.6%
UNDER \$50	2084	2147	-2.9%	1725	1974	-12.6%

FROM AUTO	3210	3493	-8.1%	2691	3221	-16.5%
BICYCLE	105	89	18.0%	55	50	10.0%
SHOPLIFTING	993	708	40.3%	929	921	0.9%
OTHERS	2311	2647	-12.7%	2171	2305	-5.8%
VEHICLE THEFT TOTAL	855	1335	-36.0%	692	1089	-36.5%
ARSON TOTAL	61	93	-34.4%	48	78	-38.5%
TOTALS	11354	13152	-13.7%	10473	12326	-15.0%
VIOLENT	1547	1790	-13.6%	1345	1743	-22.8%
PROPERTY	9807	11362	-13.7%	9128	10583	-13.7%

*Note: Data in this report is based on preliminary numbers for the most current month. Offenses are counted based on Uniform Crime Reporting (UCR) guidelines.

December, 2009

Eastway Division (06)			
	<u>Current Year-to-Date</u>	<u>Past Year-to-Date</u>	<u>Percent Change</u>
MURDER & NON-NEGLIGENT MANSLAUGHTER	9	7	28.6%
RAPE	17	24	-29.2%
ROBBERY	277	322	-14.0%
ARMED	229	279	-17.9%
STRONG-ARM	48	43	11.6%
AGGRAVATED ASSAULT	244	372	-34.4%
BURGLARY	756	974	-22.4%
RESIDENTIAL	629	762	-17.5%
COMMERCIAL	127	212	-40.1%
LARCENY	1696	2275	-25.5%
FROM AUTO	762	1111	-31.4%
BICYCLE	39	34	14.7%
SHOPLIFTING	342	431	-20.6%
OTHERS	553	699	-20.9%
VEHICLE THEFT	285	467	-39.0%
ARSON	22	30	-26.7%
TOTALS	3306	4471	-26.1%
VIOLENT PROPERTY	547 2759	725 3746	-24.6% -26.3%

North Tryon Division (07)			
	<u>Current Year-to-Date</u>	<u>Past Year-to-Date</u>	<u>Percent Change</u>
MURDER & NON-NEGLIGENT MANSLAUGHTER	8	11	-27.3%
RAPE	43	24	79.2%
ROBBERY	305	384	-20.6%
ARMED	241	334	-27.8%
STRONG-ARM	64	50	28.0%
AGGRAVATED ASSAULT	341	364	-6.3%
BURGLARY	735	914	-19.6%
RESIDENTIAL	626	643	-2.6%
COMMERCIAL	109	271	-59.8%
LARCENY	1442	1549	-6.9%
FROM AUTO	672	811	-17.1%
BICYCLE	11	11	0.0%
SHOPLIFTING	174	114	52.6%
OTHERS	585	613	-4.6%
VEHICLE THEFT	0	482	-32.4%
ARSON	29	22	31.8%
TOTALS	3323	3750	-11.4%
VIOLENT PROPERTY	697 2532	783 2967	-11.0% -14.7%

December, 2009

North Division (11)			
	<u>Current Year-to-Date</u>	<u>Past Year-to-Date</u>	<u>Percent Change</u>
MURDER & NON-NEGLIGENT MANSLAUGHTER	4	10	-60.0%
RAPE	26	17	52.9%
ROBBERY	143	156	-8.3%
ARMED	113	136	-16.9%
STRONG-ARM	30	20	50.0%
AGGRAVATED ASSAULT	216	261	-17.2%
BURGLARY	1204	1581	-23.8%
RESIDENTIAL	1051	1287	-18.3%
COMMERCIAL	153	294	-48.0%
LARCENY	2281	2426	-6.0%
FROM AUTO	1133	1203	-5.8%
BICYCLE	17	12	41.7%
SHOPLIFTING	449	408	10.0%
OTHERS	682	803	-15.1%
VEHICLE THEFT	240	385	-37.7%
ARSON	16	37	-56.8%
TOTALS	4130	4873	-15.2%
VIOLENT PROPERTY	389 3741	444 4429	-12.4% -15.5%

University City Division (14)			
	<u>Current Year-to-Date</u>	<u>Past Year-to-Date</u>	<u>Percent Change</u>
MURDER & NON-NEGLIGENT MANSLAUGHTER	5	3	66.7%
RAPE	23	17	35.3%
ROBBERY	160	204	-21.6%
ARMED	127	172	-26.2%
STRONG-ARM	33	32	3.1%
AGGRAVATED ASSAULT	145	151	-4.0%
BURGLARY	841	1002	-16.1%
RESIDENTIAL	715	780	-8.3%
COMMERCIAL	126	222	-43.2%
LARCENY	2541	3163	-19.7%
FROM AUTO	1365	1944	-29.8%
BICYCLE	20	19	5.3%
SHOPLIFTING	379	355	6.8%
OTHERS	777	845	-8.0%
VEHICLE THEFT	297	426	-30.3%
ARSON	19	26	-26.9%
TOTALS	4030	4992	-19.3%
VIOLENT PROPERTY	332 3698	375 4617	-11.5% -19.9%

December, 2009

Hickory Grove Division (12)			
	<u>Current Year-to-Date</u>	<u>Past Year-to-Date</u>	<u>Percent Change</u>
MURDER & NON-NEGLIGENT MANSLAUGHTER	2	6	-66.7%
RAPE	25	18	38.9%
ROBBERY	157	192	-18.2%
ARMED	131	170	-22.9%
STRONG-ARM	26	22	18.2%
AGGRAVATED ASSAULT	176	185	-4.9%
BURGLARY	727	907	-19.8%
RESIDENTIAL	610	744	-18.0%
COMMERCIAL	117	163	-28.2%
LARCENY	1315	1538	-14.5%
FROM AUTO	539	775	-30.5%
BICYCLE	15	17	-11.8%
SHOPLIFTING	180	150	20.0%
OTHERS	581	596	-2.5%
VEHICLE THEFT	239	444	-46.2%
ARSON	18	31	-41.9%
TOTALS	2659	3321	-19.9%
VIOLENT PROPERTY	360 2299	401 2920	-10.2% -21.3%

Independence Division (17)			
	<u>Current Year-to-Date</u>	<u>Past Year-to-Date</u>	<u>Percent Change</u>
MURDER & NON-NEGLIGENT MANSLAUGHTER	5	5	0.0%
RAPE	21	20	5.0%
ROBBERY	201	228	-11.8%
ARMED	169	188	-10.1%
STRONG-ARM	32	40	-20.0%
AGGRAVATED ASSAULT	210	275	-23.6%
BURGLARY	676	884	-23.5%
RESIDENTIAL	583	694	-16.0%
COMMERCIAL	93	190	-51.1%
LARCENY	1851	1887	-1.9%
FROM AUTO	867	1075	-19.3%
BICYCLE	21	34	-38.2%
SHOPLIFTING	346	191	81.2%
OTHERS	617	587	5.1%
VEHICLE THEFT	270	360	-25.0%
ARSON	19	23	-17.4%
TOTALS	3253	3682	-11.7%
VIOLENT PROPERTY	437 2816	528 3154	-17.2% -10.7%

December, 2009

Providence Division (16)			
	<u>Current Year-to-Date</u>	<u>Past Year-to-Date</u>	<u>Percent Change</u>
MURDER & NON-NEGLIGENT MANSLAUGHTER	0	2	-100.0%
RAPE	16	18	-11.1%
ROBBERY	109	146	-25.3%
ARMED	82	105	-21.9%
STRONG-ARM	27	41	-34.1%
AGGRAVATED ASSAULT	144	160	-10.0%
BURGLARY	645	878	-26.5%
RESIDENTIAL	493	655	-24.7%
COMMERCIAL	152	223	-31.8%
LARCENY	2364	2704	-12.6%
FROM AUTO	1378	1601	-13.9%
BICYCLE	31	19	63.2%
SHOPLIFTING	336	260	29.2%
OTHERS	619	824	-24.9%
VEHICLE THEFT	159	310	-48.7%
ARSON	8	17	-52.9%
TOTALS	3445	4235	-18.7%
VIOLENT PROPERTY	269 3176	326 3909	-17.5% -18.8%

South Division (22)			
	<u>Current Year-to-Date</u>	<u>Past Year-to-Date</u>	<u>Percent Change</u>
MURDER & NON-NEGLIGENT MANSLAUGHTER	0	2	-100.0%
RAPE	8	14	-42.9%
ROBBERY	41	59	-30.5%
ARMED	30	42	-28.6%
STRONG-ARM	11	17	-35.3%
AGGRAVATED ASSAULT	79	107	-26.2%
BURGLARY	391	620	-36.9%
RESIDENTIAL	323	500	-35.4%
COMMERCIAL	68	120	-43.3%
LARCENY	1815	2242	-19.0%
FROM AUTO	954	1337	-28.6%
BICYCLE	26	18	44.4%
SHOPLIFTING	210	206	1.9%
OTHERS	625	681	-8.2%
VEHICLE THEFT	117	158	-25.9%
ARSON	16	17	-5.9%
TOTALS	2467	3219	-23.4%
VIOLENT PROPERTY	128 2339	182 3037	-29.7% -23.0%

December, 2009

Westover Division (26)			
	<u>Current Year-to-Date</u>	<u>Past Year-to-Date</u>	<u>Percent Change</u>
MURDER & NON-NEGLIGENT MANSLAUGHTER	7	13	-46.2%
RAPE	25	25	0.0%
ROBBERY	255	324	-21.3%
ARMED	212	263	-19.4%
STRONG-ARM	43	61	-29.5%
AGGRAVATED ASSAULT	327	448	-27.0%
BURGLARY	767	933	-17.8%
RESIDENTIAL	567	698	-18.8%
COMMERCIAL	200	235	-14.9%
LARCENY	1823	2261	-19.4%
FROM AUTO	793	1239	-36.0%
BICYCLE	19	20	-5.0%
SHOPLIFTING	304	236	28.8%
OTHERS	707	766	-7.7%
VEHICLE THEFT	254	456	-44.3%
ARSON	19	29	-34.5%
TOTALS	3477	4489	-22.5%
VIOLENT PROPERTY	614 2863	810 3679	-24.2% -22.2%

Steele Creek Division (21)			
	<u>Current Year-to-Date</u>	<u>Past Year-to-Date</u>	<u>Percent Change</u>
MURDER & NON-NEGLIGENT MANSLAUGHTER	1	10	-90.0%
RAPE	25	17	47.1%
ROBBERY	196	279	-29.7%
ARMED	164	237	-30.8%
STRONG-ARM	32	42	-23.8%
AGGRAVATED ASSAULT	200	266	-24.8%
BURGLARY	857	899	-4.7%
RESIDENTIAL	566	693	-18.3%
COMMERCIAL	291	206	41.3%
LARCENY	2272	3087	-26.4%
FROM AUTO	1106	1778	-37.8%
BICYCLE	17	11	54.5%
SHOPLIFTING	339	332	2.1%
OTHERS	810	966	-16.1%
VEHICLE THEFT	355	591	-39.9%
ARSON	25	40	-37.5%
TOTALS	3931	5189	-24.2%
VIOLENT PROPERTY	422 3509	572 4617	-26.2% -24.0%

December, 2009

Metro Division (02)			
	<u>Current Year-to-Date</u>	<u>Past Year-to-Date</u>	<u>Percent Change</u>
MURDER & NON-NEGLIGENT MANSLAUGHTER	6	7	-14.3%
RAPE	23	27	-14.8%
ROBBERY	249	324	-23.1%
ARMED	183	258	-29.1%
STRONG-ARM	66	66	0.0%
AGGRAVATED ASSAULT	463	594	-22.1%
BURGLARY	889	1004	-11.5%
RESIDENTIAL	653	657	-0.6%
COMMERCIAL	236	347	-32.0%
LARCENY	1944	2148	-9.5%
FROM AUTO	1020	1012	0.8%
BICYCLE	14	22	-36.4%
SHOPLIFTING	180	217	-17.1%
OTHERS	730	897	-18.6%
VEHICLE THEFT	298	482	-38.2%
ARSON	26	32	-18.8%
TOTALS	3898	4618	-15.6%
VIOLENT PROPERTY	741 3157	952 3666	-22.2% -13.9%

Freedom Division (27)			
	<u>Current Year-to-Date</u>	<u>Past Year-to-Date</u>	<u>Percent Change</u>
MURDER & NON-NEGLIGENT MANSLAUGHTER	9	3	200.0%
RAPE	22	22	0.0%
ROBBERY	149	235	-36.6%
ARMED	121	194	-37.6%
STRONG-ARM	28	41	-31.7%
AGGRAVATED ASSAULT	250	412	-39.3%
BURGLARY	1018	1053	-3.3%
RESIDENTIAL	820	829	-1.1%
COMMERCIAL	198	224	-11.6%
LARCENY	1967	2354	-16.4%
FROM AUTO	898	1231	-27.1%
BICYCLE	16	13	23.1%
SHOPLIFTING	341	180	89.4%
OTHERS	712	930	-23.4%
VEHICLE THEFT	380	493	-22.9%
ARSON	32	27	18.5%
TOTALS	3827	4599	-16.8%
VIOLENT PROPERTY	430 3397	672 3927	-36.0% -13.5%

December, 2009

Central Division (01)			
	<u>Current Year-to-Date</u>	<u>Past Year-to-Date</u>	<u>Percent Change</u>
MURDER & NON-NEGLIGENT MANSLAUGHTER	0	4	-100.0%
RAPE	23	23	0.0%
ROBBERY	103	130	-20.8%
ARMED	71	87	-18.4%
STRONG-ARM	32	43	-25.6%
AGGRAVATED ASSAULT	122	126	-3.2%
BURGLARY	205	274	-25.2%
RESIDENTIAL	120	114	5.3%
COMMERCIAL	85	160	-46.9%
LARCENY	2053	2077	-1.2%
FROM AUTO	1117	1059	5.5%
BICYCLE	25	14	78.6%
SHOPLIFTING	182	155	17.4%
OTHERS	729	849	-14.1%
VEHICLE THEFT	115	204	-43.6%
ARSON	3	4	-25.0%
TOTALS	2624	2842	-7.7%
VIOLENT PROPERTY	248 2376	283 2559	-12.4% -7.2%

**CITIZEN-INITIATED CALLS FOR SERVICE¹ BY TYPE
CHARLOTTE-MECKLENBURG POLICE DEPARTMENT**

<u>Type of Call²</u>	<u>2008 Year-to-Date⁵ Through December</u>	<u>2009 Year-to-Date⁵ Through December</u>	<u>Year-to-Date % Change</u>
ABC RELATED	2216	1978	-10.7%
ACCIDENT	33732	32184	-4.6%
ALARM	40289	37458	-7.0%
ANIMAL CONTROL ³	432	1140	163.9%
ASSAULT	4569	4665	2.1%
ASSAULT WITH DEADLY WEAPON	2489	2277	-8.5%
ASSIST OTHER AGENCY	9371	9106	-2.8%
BOMB THREAT	61	54	-11.5%
BREAK/ENTER	19748	16741	-15.2%
CDCP CLINICIAN VISIT ⁴	1811	1561	-13.8%
COMMUNICATING THREATS	3444	3867	12.3%
COUNTY SECURITY ³	24	17	-29.2%
CRIMINAL INTELLIGENCE	7	6	-14.3%
CRITICAL INCIDENT ⁴	24	10	-58.3%
DAMAGE TO PROPERTY	7931	6913	-12.8%
DEATH	193	170	-11.9%
DISTURBANCE	27706	26150	-5.6%
DOMESTIC INCIDENT	33479	35638	6.4%
DRUG RELATED	4017	3700	-7.9%
EXTORTION/BLACKMAIL ⁴	10	15	50.0%
FIGHT	3138	3010	-4.1%
FIRE CASE	73	51	-30.1%
FRAUD/FORGERY	4423	4837	9.4%
GAMBLING	21	29	38.1%
HARASSMENT	2070	2587	25.0%
HIT AND RUN	7386	6714	-9.1%
JUVENILE RELATED	2187	2261	3.4%
KIDNAPPING	171	159	-7.0%
LAKE ENFORCEMENT	81	72	-11.1%
LARCENY	32697	29171	-10.8%
LOITERING	6023	6878	14.2%
MISSING PERSON	6131	5722	-6.7%
NOISE COMPLAINT	14549	14155	-2.7%
OFFENSE AGAINST FAMILY	3	2	-33.3%
OFFICER CALLED IN	2	14	600.0%
OVERDOSE	449	484	7.8%
PORNOGRAPHY	9	6	-33.3%
PROPERTY	5934	4741	-20.1%
PROSTITUTION	675	0	-100.0%
PUBLIC SERVICE	16240	17367	6.9%
QUALITY OF LIFE	674	701	4.0%
ROBBERY	3199	2477	-22.6%
SEX CRIME	1183	1153	-2.5%
SPECIAL SERVICE REQUEST ⁴	7	4	-42.9%
SUICIDE	3175	1730	-45.5%
SUSPICIOUS PERSON	19704	18610	-5.6%
TRAFFIC RELATED	13162	11179	-15.1%
TRESPASS	4071	4186	2.8%
VEHICLE RELATED	34003	29459	-13.4%
VIOLENT CRIMES TASK FORCE ⁴	1	1	NA
WARRANT RELATED	2846	2778	-2.4%
WEAPON RELATED	8164	5903	-27.7%
ZONE CHECK-ADVISED EVENT ⁴	17	26	52.9%
911 HANG UP / CALLBACK	11566	11272	-2.5%
TOTAL	395587	371389	-6.1%

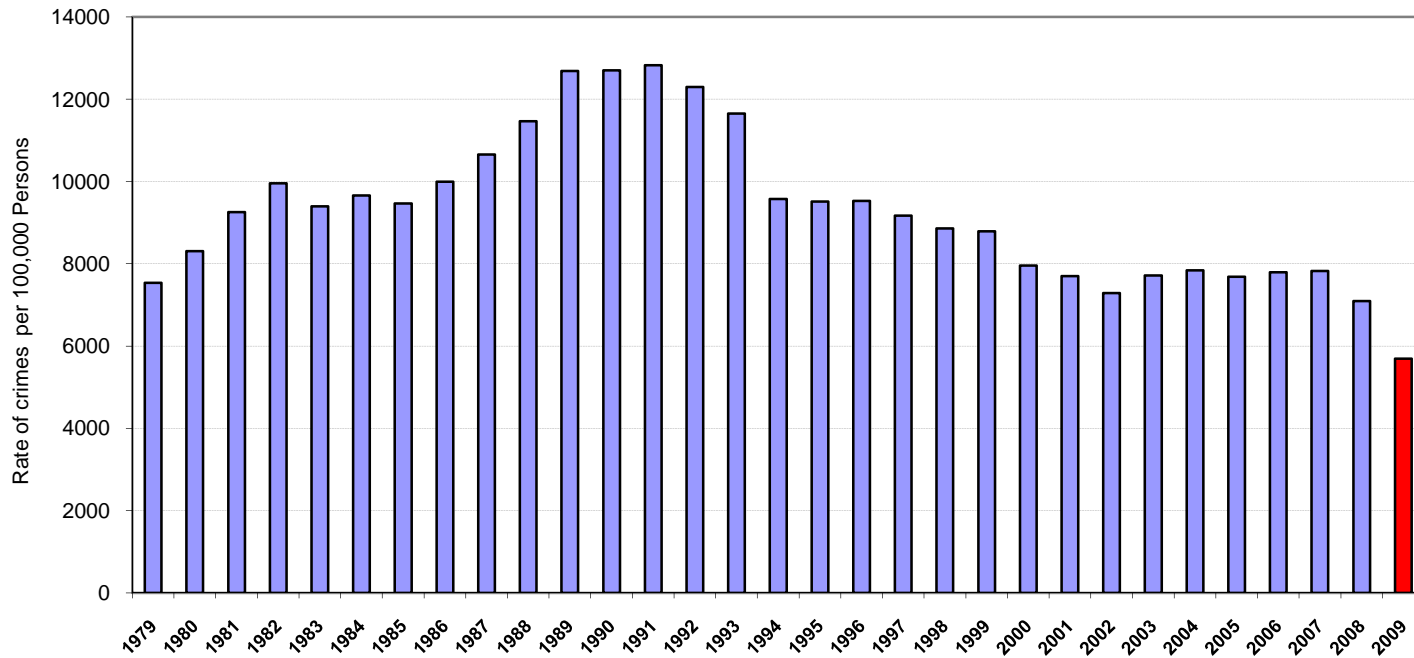
¹These totals exclude duplicate and cancelled calls for service; they include calls handled by the Crime Reporting Unit as well as by division field officers, detectives and related CMPD staff.

²The type of call is determined from the 911 call, unless updated by an officer assigned to respond.

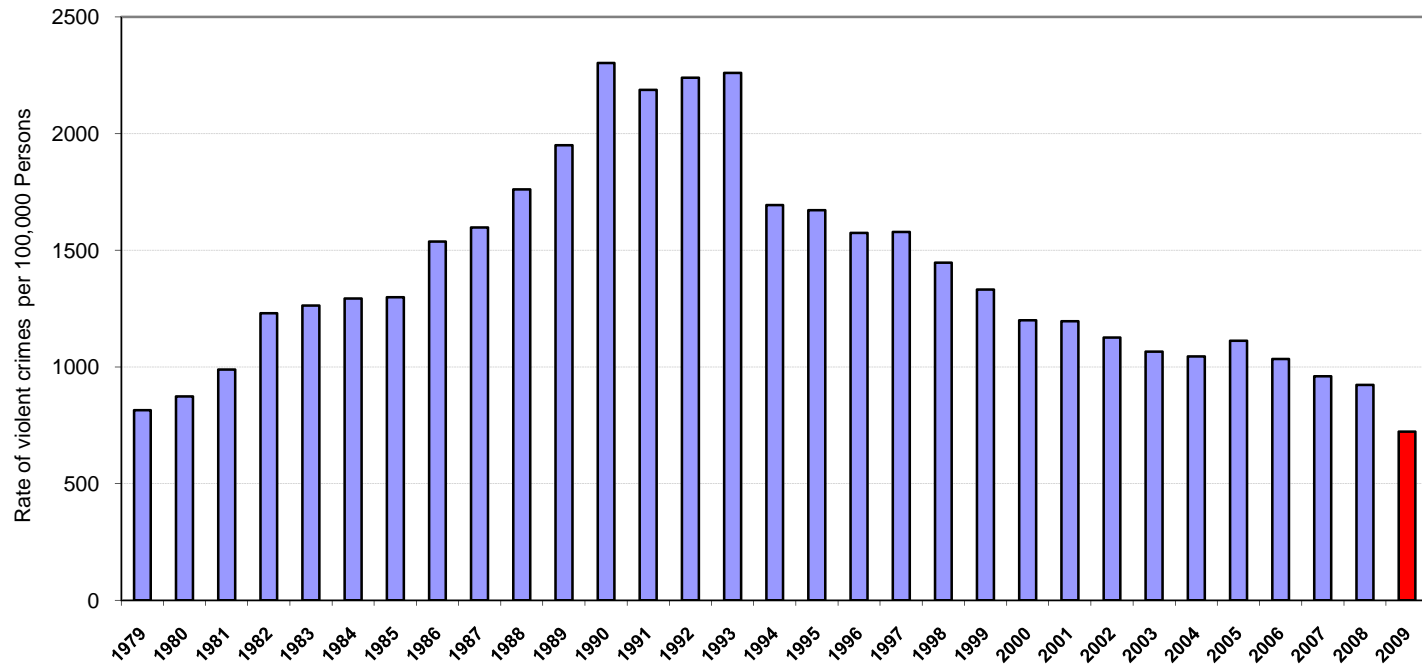
³In this summary, calls to Animal Control, Mecklenburg County Security, or Davidson Police are not included unless they also involve the dispatching of C-MPD field officers or detectives.

⁴This call type may not have been in use during part or all of the previous year or current year.

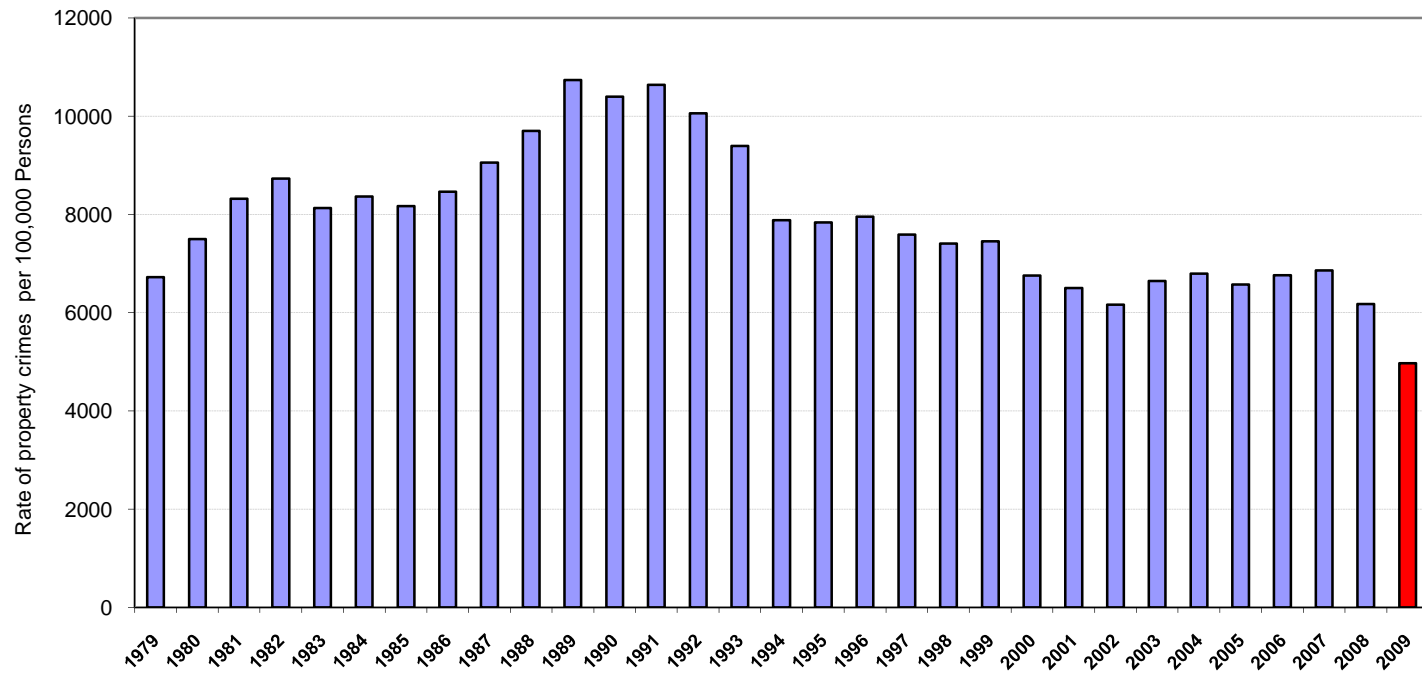
Index Crime Rates Per 100,000 Est. Jurisdiction Population
Charlotte Police Dept. (1979-1993) and Charlotte-Mecklenburg Police Dept. (1994-2009)



Violent Index Crime Rates Per 100,000 Est. Jurisdiction Population
Charlotte Police Dept. (1979-1993) and Charlotte-Mecklenburg Police Dept. (1994-2009)



Property Index Crime Rates Per 100,000 Est. Jurisdiction Population
Charlotte Police Dept. (1979-1993) and Charlotte-Mecklenburg Police Dept. (1994-2009)



Homicides 1989-2009

Charlotte Police Dept. (1989-1993) and Charlotte-Mecklenburg Police Dept. (1994-2009)

